



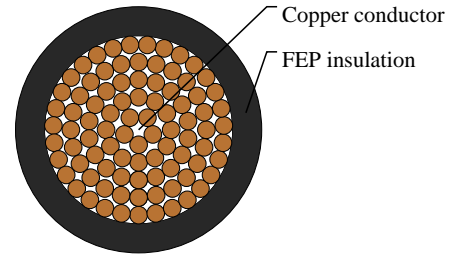
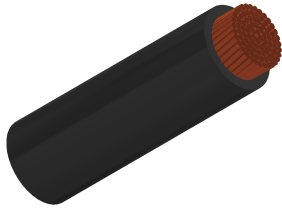
Caledonian

Automotive Cables

www.caledonian-cables.com

marketing@caledonian-cables.com

ATW-FEP 1C3



APPLICATIONS

This FEP insulated single-core cable is used for wiring of car engine room, electrical and electronic components and other product up to 200°C temperature.

STANDARDS

ES SPEC

CABLE CONSTRUCTION

Conductor: Tin coated annealed stranded copper

Insulation: Teflon(FEP)

Standard Compliance: ES SPEC

PHYSICAL AND THERMAL PROPERTIES

Operating temperature: -40 °C to +200°C

DIMENSION AND PARAMETERS

No. of Cores × Cross-sectional Area	No. and Dia. of Wires	Diameter of Conductor (max.)	Nominal Insulation Thickness	Overall Diameter (min.)	Overall Diameter (max.)	Approx. Weight	Electrical Resistance at 20°C (max.)
No.×mm ²	no./mm	mm	mm	mm	mm	kg/km	MΩ/m
1x3	120/0.18	2.6	0.4	3.4	3.6	39	6.62